

Copyright Notice

Copyright © 1998-2006 Camnetics, Inc.



Camnetics, Inc.

926 Autumn Woods Lane

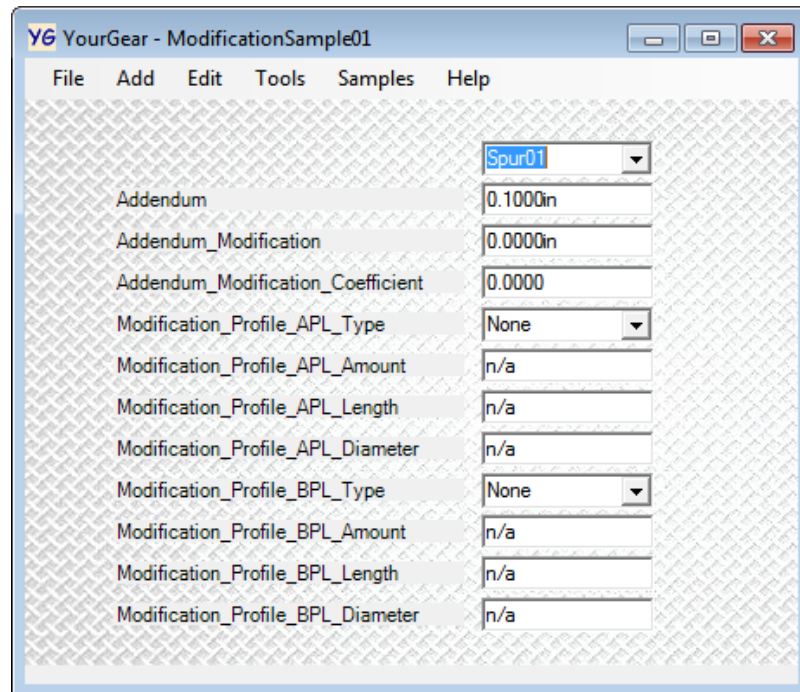
Oregon, WI 53575 USA

1-608-835-2378

support@camnetics.com

YourGear Interface

The YourGear Interface gives the user a method for creating custom interfaces. Most component properties can be added to the interface. Property text (labels) can be changed to suit the user, even to a different language. The interfaces can be saved and shared with other users. Multiple interfaces can be created, each for specific purposes.



YourGear Interface sample for modifying the profile.

File

New

Clears the current interface and starts a new one.

Set as Default

Sets the current interface as the default. The next time the YourGear Interface menu item is clicked or the F5 button is pushed this interface will open.

Open a YourGear Interface

Open a previously saved YourGear Interface.

Save *.ygi

Save the current YourGear Interface.

Save *.ygi As...

Save the current YourGear Interface with a new name.

Capture YourGear Screen to the Clipboard

Capture the active interface to the clipboard to be used in another program.

Exit

Close the current interface.

Add

Property

For Component

Add a new property for a component. The dialog box will default to the type of component that is active in GearTeq. The type of component can be changed. If the property is already being used in the interface that property will not be displayed in the list. Check as many properties as desired then click the ADD button. This menu item is also available by clicking on the right mouse button.

For Assembly Position

Add a new property for an assembly position. The dialog box will default to the type of component that is active in GearTeq. The type of component can be changed. If the property is already being used in the interface that property will not be displayed in the list. Check as many properties as desired then click the ADD button. This menu item is also available by clicking on the right mouse button.

Component

The Add>Component menu item will add a component and assembly column to the interface. This menu item is also available by clicking on the right mouse button.

Assembly Position

If an assembly position is not currently in the interface this menu item will be enabled.

Background Image

The Background Image button allows the user to specify an image to be used for the background of the interface. This can be a png, jpg or bmp type of image.

Edit

Refresh

The Refresh menu item forces a refresh of the data.

Reload

The Reload menu item force a reload of the interface. If a new component has been added to GearTeq you may need to Reload the interface data.

Enable Drag

The Enable Drag menu item turns on and off the ability to move or rearrange items on the interface. Hold the left mouse button down for a moment before dragging the items. The items highlighted in blue will be moved as the mouse position changes. This menu item is also available by clicking on the right mouse button.

Show Box names

When building or editing an existing interface it might be helpful to know which box is which, especially in the free-form mode.

Remove Property

The Remove Property menu item will prompt the user if the last selected property should be removed. This menu item is also available by clicking on the right mouse button.

Remove Component

The Remove Component menu item will prompt the user if the last component in the interface should be removed. This menu item is also available by clicking on the right mouse button.

Remove All Assembly Positions

The Remove All Assembly Positions menu item will prompt the user to verify that all assembly position items are to be removed from the form.

Label**Label Visible**

The Label Visible is a check box. This controls the currently selected property's label visibility. De-select to make the label invisible. This menu item is also available by clicking on the right mouse button.

Edit Text

Clicking the Edit Text menu will open a dialog box that enables the user to change the text for the currently active property. The active label will be highlighted in yellow on the form. This menu item is also available by clicking on the right mouse button.

Property**Common Property**

The Common Property menu item controls whether the property is common or not for all the components in the interface. For example, two spur gears could be listed and the diametral pitch

could be a common property. Then if the diametral pitch is changed, the diametral pitch for both gears will be changed. This menu item is also available by clicking on the right mouse button.

Edit Tool Tip Text

The Edit Tool Tip Text menu item opens a dialog box allowing the user to change the tool tip text that is displayed when the cursor is hovered over a property text box.

Move Up

The Move Up menu item will swap positions of the current property with the one immediately above it. This menu item is also available by clicking on the right mouse button.

Move Down

The Move Down menu item will swap positions of the current property with the one immediately below it. This menu item is also available by clicking on the right mouse button.

Background Image

Remove Background Image

Click this item to remove the background image from the interface.

Background Layout Style

The Background Layout Style menu item is a drop down control that lets the user select one of the five standard methods for displaying an image on a form.

Tools

Keep On Top

The Keep On Top menu item is a check box. If checked the interface will stay on top of all other forms displayed on the computer screen.

Convert to Free-form

The Convert to Free-form menu item will convert the interface from Horizontal to Free-form. In the Free-form mode, each individual item can be repositioned on the interface. In the Free-form mode, the items are not highlighted in blue when dragging. To switch back to the Horizontal mode, open up the Options dialog window. The YourGear Interface will remember the positions for both the Horizontal and Free-form modes.

Options

The Options menu opens the Options dialog window. In the dialog, different options are available that are not available elsewhere.

Samples

Miscellaneous interface samples are available here.

Help

Open PDF

Open PDF opens this document.

Collaborate

Go to the YourGear Web Page

This item may not be available at this time.

Submit for Collaboration

This menu item opens a default email addressed to support@camnetics.com Attached the appropriate interface that you would like to share with other users.